

HELLO FROM CMI



Your journey starts here



WELCOME TO YOUR CMI INDUCTION



As a learner on a CMI dual accredited degree, you also have unlimited access to everything we have to offer through CMI membership. If you're not sure what that means for you, don't worry because we've got you covered! We'll be using this pack to guide you through everything that is currently available to you as a CMI member, plus how to make the most of it to help you excel in your studies, and prepare you for life afterwards!

Our CEO, Ann Francke, has a special message waiting for you... take a look now



INTRODUCTION FOR LEARNERS

CMI MEMBERSHIP

We've partnered with your university to provide you with unlimited, and completely exclusive, CMI membership to enrich your studies, and provide you with all the tools, knowledge and skills you'll need to secure that job and be a successful professional.

I AM CONNECTED



“ Live streams, podcasts, webinars and the social media community, help increase my network. ”

[EVENTS & NETWORKING >](#)

I AM SUPPORTED



“ I receive trusted guidance, encouragement and support from an experienced CMI Mentor. ”

[CMI MENTORING >](#)

I AM ON TRACK



“ The career development centre advice will help me to get my dream job. ”

[CAREER DEVELOPMENT CENTER >](#)

I AM KNOWLEDGEABLE



“ Thousands of on demand, current validated resources, keeps me up to date. ”

[MANAGEMENTDIRECT >](#)

I AM INFORMED



“ Insights and thought leadership delivered direct to my inbox, keeps my finger on the pulse. ”

[INSIGHTS >](#)

I AM IN CONTROL



“ Access to the Kooth mental health platform helps me manage my wellbeing. ”

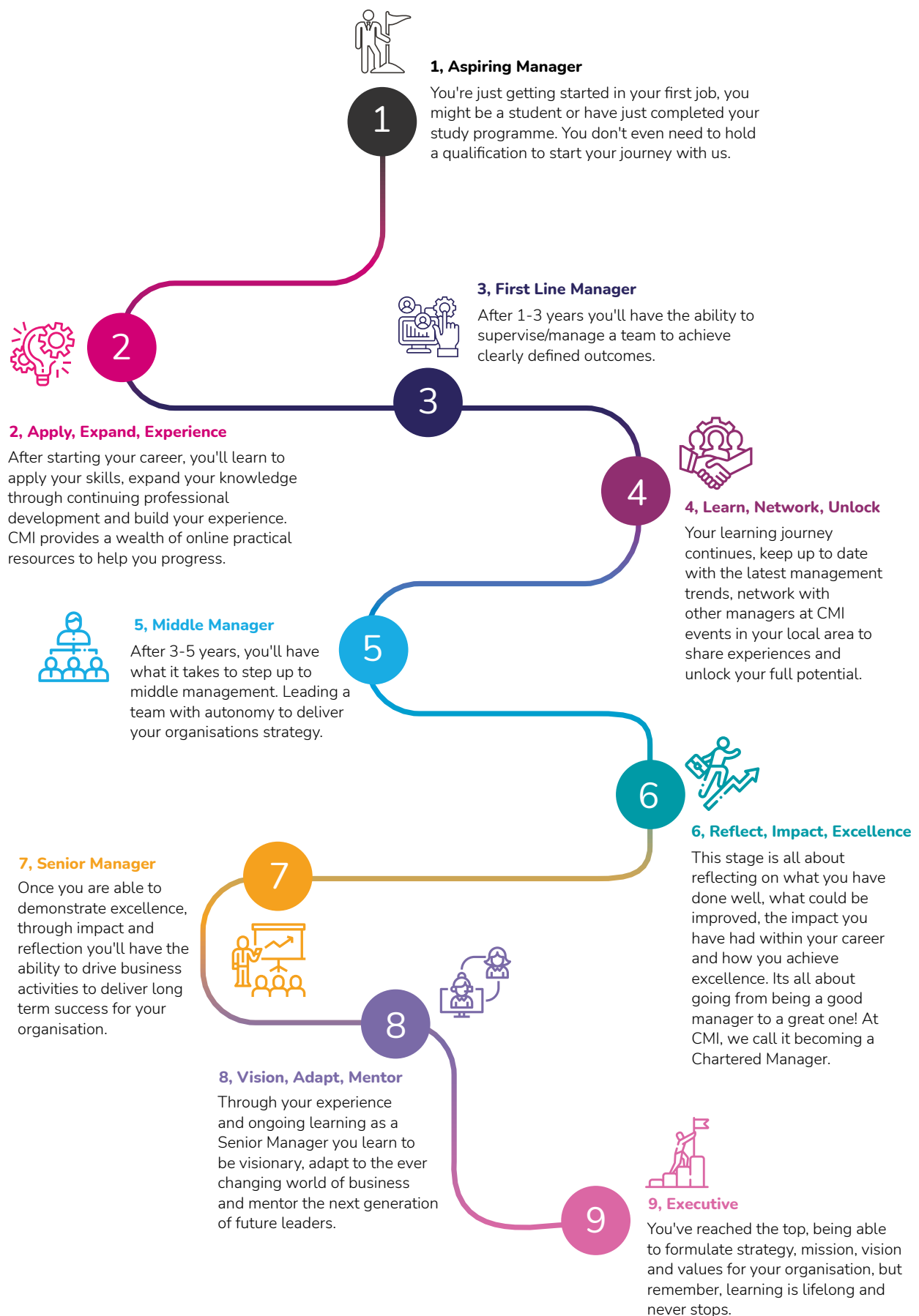
[KOOH >](#)

YOUR CMI INDUCTION VIDEO

Watch the video below to learn more about
your CMI membership.



YOUR CAREER JOURNEY WITH CMI MEMBERSHIP



YOUR DIGITAL INDUCTION JOURNEY

We want to make sure that you're making the most of the resources available to help you excel whilst on the programme, and beyond. To showcase all that CMI has to offer, you're invited to complete your CMI virtual induction - a series of activities to help familiarise you with your membership benefits and resources.

It's incredibly simple, yet crucial to understanding all that is exclusively available to you as a learner! **All you need to do is:**



CMI'S SKILLS DIAGNOSTICS

CMI's skills diagnostics have been designed to support your development. You get a chance to assess your skills, identify any gaps, and get access to tailored resources to help you fill in those gaps and progress. Follow the path below to find the correct diagnostic for you.

WHAT IS THE LEARNING STATUS?

Undergraduate student on a Dual Accredited Degree

EMPLOYABILITY SKILLS DIAGNOSTIC

The Employability Skills Diagnostic is an easy-to-use tool for undergraduates on CMI Dual Accredited Degree courses. It has been designed to help you identify the areas you need to develop in line with the top skills currently being looked for by employers. These core skills are aligned against our Professional Standard and backed by our employability research, carried out in collaboration with employers. You will get the opportunity to upskill yourself during your course with resources tailored to your skills gaps, ensuring you finish your degree and can evidence the key skills employers want.

Learn more about the [Employability Skills Diagnostic](#)

Postgraduate student or Apprentice

MANAGEMENT DIAGNOSTIC

Whether you are at the start of your management career or are an experienced manager, our Management Diagnostics will help you take the next step in your career with a development plan tailored to you! Simply answer a few questions about your knowledge and experience, and it'll assess your management skills against the Professional Standard for Management & Leadership, giving you the opportunity to upskill yourself with resources tailored to your skills gaps.

Learn more about the [Management Diagnostic](#)

GETTING INVOLVED WITH CMI

CMI's mission of creating better led and managed organisations often brings together many like-minded people who want to see positive changes in business and education, and there are so many ways you can get involved and have your say!

DIGITAL EVENTS

We regularly host a variety of events and webinars across our digital platforms. From our Better Managers Briefings each week with our CEO Ann Francke, right through to personal development skills, support and top tips! These events are often interactive, encouraging your input through Q&As and live chat functions, so get involved and join the conversation.

[Take a look at the Digital Events Library](#)



SOCIAL MEDIA

Be the first to hear about exciting updates and developments, and connect with us when it's convenient for you by following and actively engaging with our social media channels.



FUTURE LEADERS COMMUNITY

Our membership community for young members who are all proactively looking to get ahead in their career. Part peer-to-peer community, part guided self-development, Future Leaders is designed to lead you from one career milestone to the next.

[Find out more](#)



The Chartered Management Institute (CMI) works with business and education to inspire people to unleash their potential and become skilled, confident and successful managers and leaders.

With a wealth of practical qualifications, events and networking opportunities on offer throughout the UK and Asia-Pacific, CMI helps people boost their career prospects and connect them with other ambitious professionals in any industry and sector.

In fact, CMI has more than **130,000** people training to be better managers right now. Backed by a unique Royal Charter, CMI is the only organisation allowed to award Chartered Manager status – the ultimate management accolade.

CMI's thought leadership, research and online resources provide practical insight on critical issues for a **182,000** plus membership community and anyone looking to improve their skills, nurture high-performing teams and help pave the way for the next generation of managers and leaders.

For more information, please visit www.managers.org.uk
Chartered Management Institute on LinkedIn, Facebook, Twitter and Instagram.



Twitter: [@cmi_managers](https://twitter.com/cmi_managers)



Facebook: www.facebook.com/bettermanagers



LinkedIn: [Chartered Management Institute](https://www.linkedin.com/company/Chartered-Management-Institute)



Instagram: [@cmi_managers](https://www.instagram.com/cmi_managers)

INVESTORS IN PEOPLE™
We invest in people Platinum



Chartered Management Institute
Management House
Cottingham Road, Corby
Northamptonshire, NN17 1TT

Registered charity number 1091035
Incorporated by Royal Charter
Charity registered in Scotland number SC038105

Copyright Chartered Management Institute ©
CMI Learning Pack_DALearner - September 2022 V8

#BetterManagers

